

Pioneering for You

wilo

Wilo-Drainlift EX 污水提升系统



“威乐 (Wilo),
值得信赖的
水泵专家。”



Wilo-Drainlift EX

Sewage lifting unit is applied to drainage of residential housing or commercial buildings, e.g. restaurants, department stores and so on. Raw sewage which cannot be piped to the canalization through the use of natural inclines and sewage from toilet systems that is generated below the backflow level are pursuant to DIN EN12056-2015, to be piped to the public canalization system by means of an automatic lifting unit. Sewage containing mineral oils or explosive admixtures must be guided through oil precipitators and/or petrol precipitators; those containing fatty substances must go through grease traps and those with sand through sand catchers.

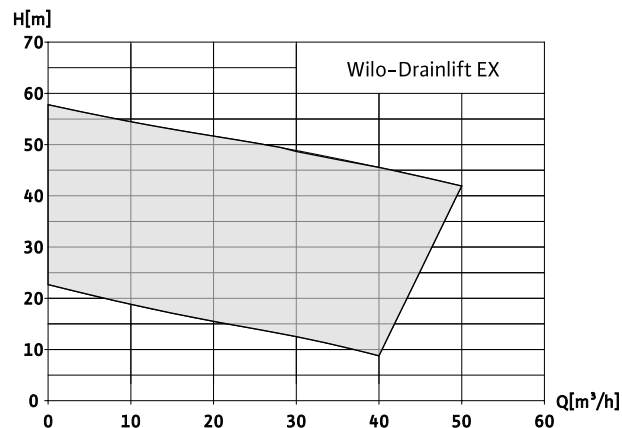
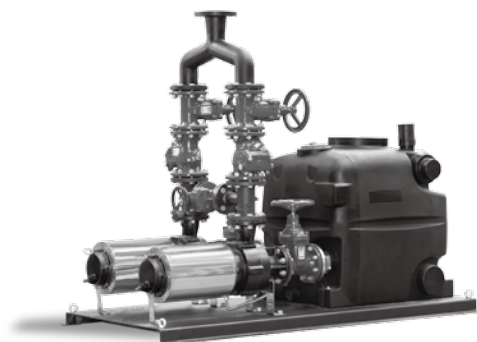
本污水提升系统用于家庭或商用建筑中的污水排放（例如餐馆，商场，地铁站等）自动提升不能靠重力自流排放到公共管网系统的污水。符合 DIN EN12056-2015 的规定。含矿物油或爆炸性的液体须事先进行分离。含油脂的要经过油水分离器。含沙子的要经过除砂滤网。

www.wilo.com.cn

Pioneering for You

wilo

Series description Wilo-Drainlift EX 产品概述



Description

Sewage lifting unit is applied to drainage of residential housing or commercial buildings, e.g. restaurants, department stores and so on. Raw sewage which cannot be piped to the canalization through the use of natural inclines and sewage from toilet systems that is generated below the backflow level are pursuant to DIN EN 12056-2015, to be piped to the public canalization system by means of an automatic lifting unit. Sewage containing mineral oils or explosive admixtures must be guided through oil precipitators and/or petrol precipitators; those containing fatty substances must go through grease traps and those with sand through sand catchers

Application

- Elimination of raw sewage, which cannot be piped to the sewer system through natural inclines
- For the drainage of building complexes (hotel, hospitals, subway station, etc.)

Product advantages

- Large switching volume
- Low weight
- Wide performance spectrum
- Suitable for continuous operation

描述

本污水提升系统用于家庭或商用建筑中的污水排放(例如餐馆, 商场, 地铁站等)自动提升不能靠重力自流排放到公共管网系统的污水。符合 DIN EN 12056-2015 的规定。含矿物油或爆炸性的液体须事先进行分离。含油脂的要经过油水分离器。含沙子的要经过除砂滤网

应用

- 泵送不能由重力自流进排污管线的原生污水
- 输送大型建筑排出的综合污水(如宾馆、医院、地铁站等)

产品特点

- 有效容积大
- 重量轻
- 运行范围广
- 适用于连续运行的场合

Series description Wilo-Drainlift EX 产品概述

Construction

- Connection-ready, totally immersible compact unit (immersion height: 2m WS, submersion time: 7days), with one or three collection tanks that is/are impermeable to gas and water. Equipped with two sewage pumps of the Wilo-FAG EW80Z or Wilo-FAG EW50Z series (material: cast iron). Easy handling on the basis of low total weight for the system, e.g. Optimal tank draining, thanks to depth suction

Note: Switchgear is not submersible and must for that reason be aligned in such a way that it is secure against flooding

- Pump with cutter could chop faeces
- Backwash function could make maintain easier

Controlling

1. Chinese interface
2. Water level display
3. Programming by txt
4. Work mode set
5. Timing switch
6. Running time display
7. Warning message display
8. Sensor failure alarm
9. Alarm record and reset function
10. System remain after a power failure
11. Protection function: short circuit, overheat, overload, leakage, phase, voltage (optional)
12. Low/high water level protection to prevent dry running pumps
13. Fault signal outputs to remote monitoring system
14. Optional communications modules (Standard: Ethernet Interface)

Scope of delivery

- Microprocessor controlled switchgear with automatic duty cycling, stand by and peak load operation, potential-free contacts and indicator lights for operation and malfunctions for each pump
- Rubber connector for inlet pipe and ventilation

Type key

Example: Drainlift EX 1080-2/7.5-45

EX: Extension range of sewage lifting unit

10: Pressure port DN100 (8=DN80)

80: Total volume more than 800L (40: more than 400L ; 12: more than 1200L)

2: Double pump system

7.5: Performance P2 for each pump[kW]

45: Maximum head for each pump[m]

结构特点

- 可直接安装，整套设备全部可潜入水中（没水深度：2m 水柱，浸没时间：7 天），带 1 到 3 个气密性的水箱。配有 2 台 Wilo-FAG EW80Z 或 Wilo-FAG EW50Z 系列潜污泵（铸铁材质）。系统重量轻，易于安装和移动。最佳抽吸效果可至水箱底部

注：开关柜不能被淹没，必须装在水淹不到的安全位置

- 双流道叶轮配高强度切刀，能够有效切碎粪便，避免系统堵塞
- 设备配有反冲洗管路，当污水收集罐与污水泵进水口间发生堵塞时，设备可进行反冲洗

控制特点

1. 中文菜单显示
2. 实时显示液位
3. 菜单可通过文本面板进行设置
4. 可进行有无备用泵的设置
5. 可定时切换水泵
6. 可显示每台泵运行时间
7. 通过界面显示各种运行及报警状态
8. 传感器故障自动报警
9. 报警记录及复位功能，使系统更加安全稳定
10. 停电后复电时系统自动保持原有的状态
11. 系统具有短路、过热、过载、泄露、缺相、欠压（可选）等保护功能
12. 系统有高低水位保护功能，防止水泵干转
13. 系统能提供各种运行及故障信号干点输出作为系统状态远程监控点，与监控中心连接简单，经济实用，可靠性高
14. 可选各种通讯模块，标配以太网接口

供货范围

- 带微处理器的控制开关柜，可自动按工况运行。可操作备用和峰值运行，每台水泵有接触器和运行指示灯
- 进口及排气橡胶软管

型号说明

例：Drainlift EX 1080-2/7.5-45

EX: 污水提升系统扩展系列

10: 出水管径 DN100(8=DN80)

80: 总容积 800L 以上 (40: 400L 以上 ; 12: 1200L 以上)

2: 双泵系统

7.5: 单台泵功率 P2[kW]

45: 单台泵最高扬程 [m]

Technical data 技术参数

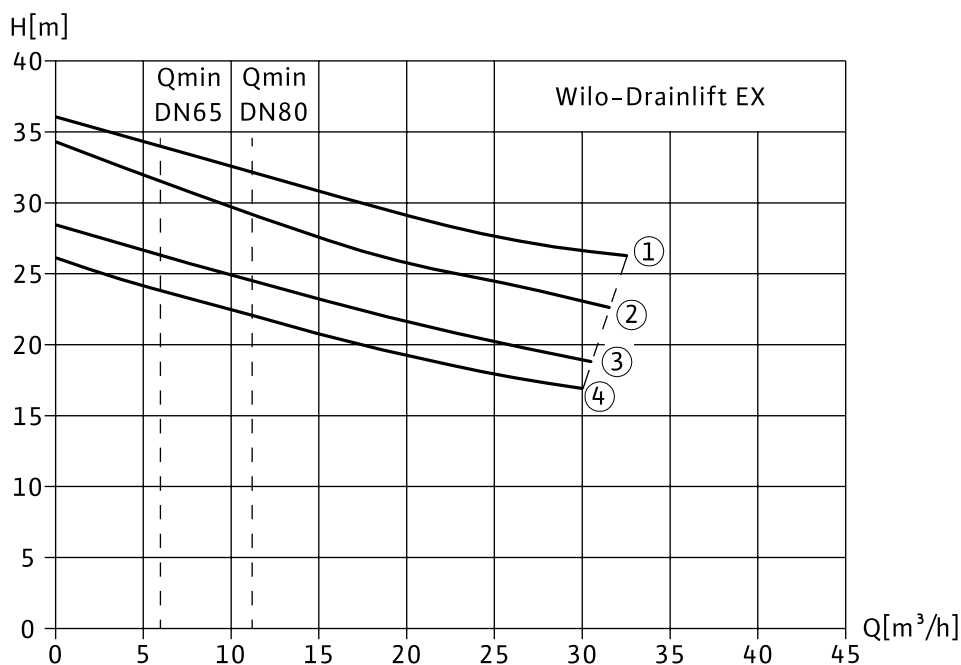
Technical data 技术参数		Type 型号											
Approved fluids 适用介质		840-2/5.5-36	840-2/5.5-34	840-2/4-28	840-2/4-26	1040-2/7.5-45	1040-2/7.5-36	1040-2/5.5-32	1040-2/5.5-26	1040-2/4-23	1040-2/15-57	1040-2/11-47	1040-2/11-47
Domestic sewage not containing faeces (最大颗粒直径小于46mm)		880-2/5.5-36	880-2/5.5-34	880-2/4-28	880-2/4-26	1080-2/7.5-45	1080-2/7.5-36	1080-2/5.5-32	1080-2/5.5-26	1080-2/4-23	1080-2/15-57	1080-2/11-47	1080-2/11-47
Domestic sewage containing faeces (最大颗粒直径小于75mm)		812-2/5.5-36	812-2/5.5-34	812-2/4-28	812-2/4-26	1012-2/7.5-45	1012-2/7.5-36	1012-2/5.5-32	1012-2/5.5-26	1012-2/4-23	1012-2/15-57	1012-2/11-47	1012-2/11-47
Connections 连接尺寸		3xDN100/150, 1xDN100											
Suction connection 进口管径 [DN]		DN80											
Discharge connection 出口管径 [DN]		DN80											
Bleeding 排气管径 [DN]		DN65											
Pressure rate 法兰承压等级 [DN]		PN10											
Performance 水泵性能		2900 RPM											
Rated speed 额定转速 [RPM]		+3...+40°C											
Fluid temperature 流体温度 [°C]		4-10											
PH value PH 值		2											
Num of pump 水泵台数		双流道叶轮 + 切刀											
Impeller type 叶轮形式		S1											
Ball passage 最大颗粒通过能力 [mm]		400L 以上 / 2x400L 以上 / 3x400L 以上											
Operation mode per pump 单泵运行制式		305L/610L/915L											
Gross tank volume 污水收集罐容积 [L]		550mm											
Max. Switching volume 最大有效容积 [L]		160mm											
Min. water level off 最小停泵液位 [mm]		1/2/3											
Min. water level on 最小启泵液位 [mm]		360											
Num of tank 污水收集罐数量		360											
Weight 机柜重量 [KG]		360											
Motor data 电机参数		IP68											
Protection class 防护等级		F											
Insulation class 绝缘等级		2x5.5kW											
Motor power 电机功率 P ₁ [kW]		2x7.5kW											
Pole 电机极数		2x4kW											
Cable length 电缆长度 [m]		2x4kW											
Max. switch frequency 最大启动次数 [1/h]		2x5.5kW											
Mains power 电源		2x7.5kW											
Voltage 电压		2x4kW											
Construction materials 部件主要材质		2x5.5kW											
Motor casing 电机壳		2x4kW											
Pump casing 泵壳		2x4kW											
Impeller 叶轮		2x4kW											
Cutter 切刀		2x4kW											
Shaft 轴		2x4kW											
Mechanical seal 机械密封		2x4kW											
Tank 污水收集罐		2x4kW											
Valve and Pipe 阀门和管路		2x4kW											
Others 其他		2x4kW											

Subject to change without prior notice.

威乐公司不断改进和创新产品，若技术参数发生改变，以变更后数据为准，保留技术更改的权利。

Pump curves 性能曲线

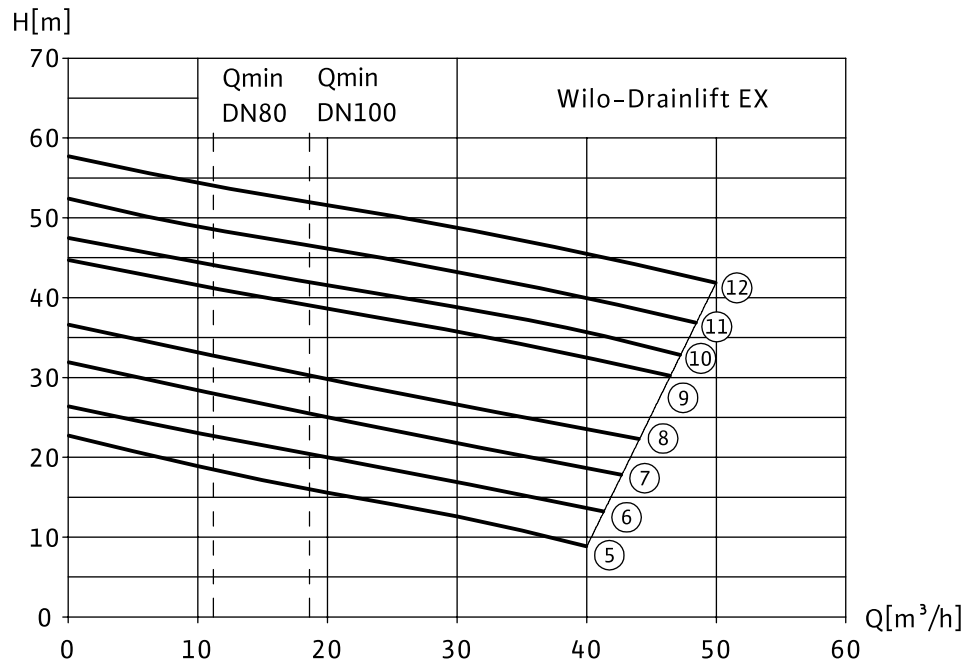
Wilo-Drainlift EX DN80



曲线号	机组型号		
1	EX840-2/5.5-36	EX880-2/5.5-36	EX812-2/5.5-36
2	EX840-2/5.5-34	EX880-2/5.5-34	EX812-2/5.5-34
3	EX840-2/4-28	EX880-2/4-28	EX812-2/4-28
4	EX840-2/4-26	EX880-2/4-26	EX812-2/4-26

Pump curves 性能曲线

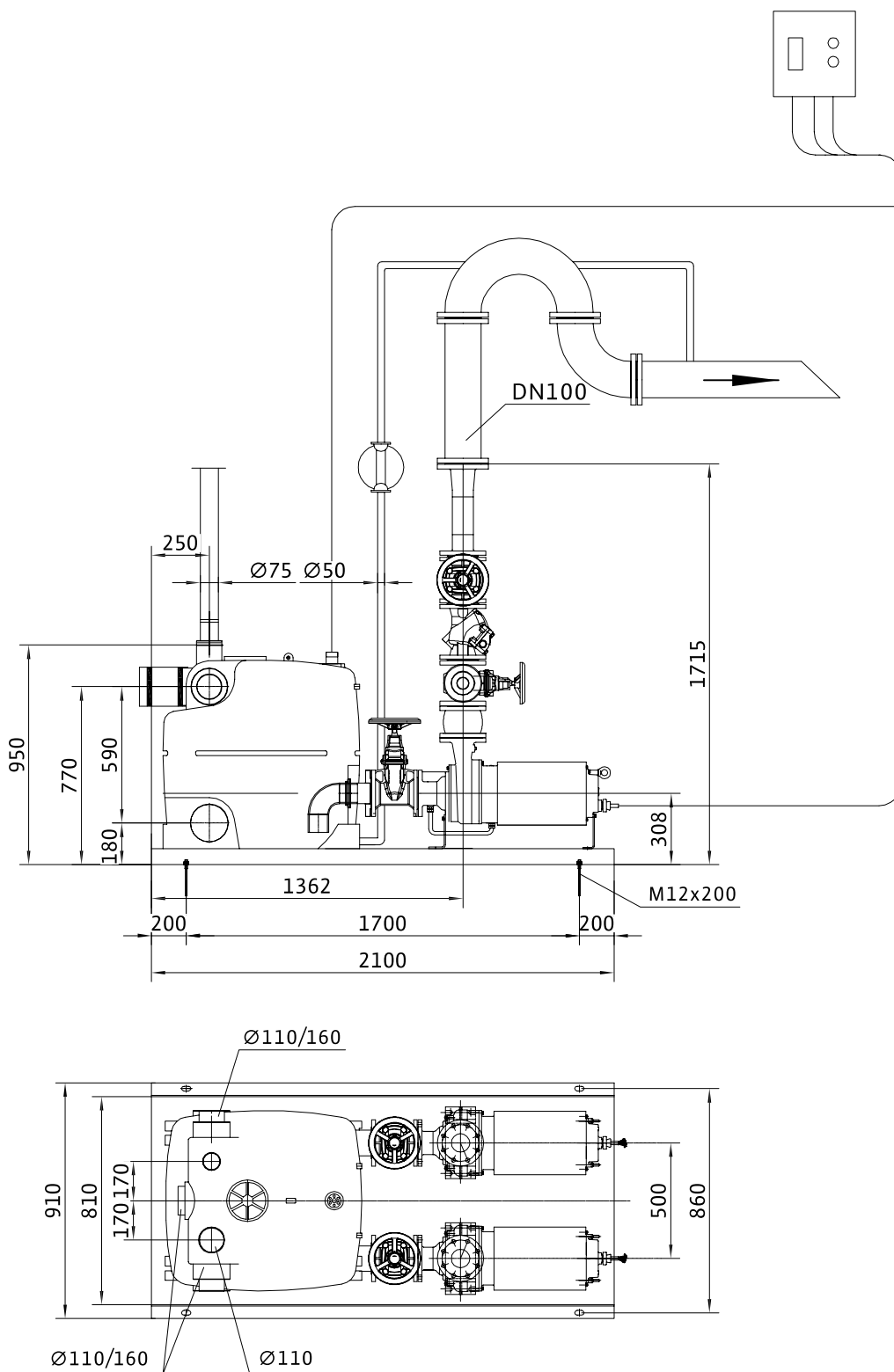
Wilo-Drainlift EX DN100



曲线号	机组型号		
5	EX1040-2/4-23	EX1080-2/4-23	EX1012-2/4-23
6	EX1040-2/5.5-26	EX1080-2/5.5-26	EX1012-2/5.5-26
7	EX1040-2/5.5-32	EX1080-2/5.5-32	EX1012-2/5.5-32
8	EX1040-2/7.5-36	EX1080-2/7.5-36	EX1012-2/7.5-36
9	EX1040-2/7.5-45	EX1080-2/7.5-45	EX1012-2/7.5-45
10	EX1040-2/11-47	EX1080-2/11-47	EX1012-2/11-47
11	EX1040-2/11-52	EX1080-2/11-52	EX1012-2/11-52
12	EX1040-2/15-57	EX1080-2/15-57	EX1012-2/15-57

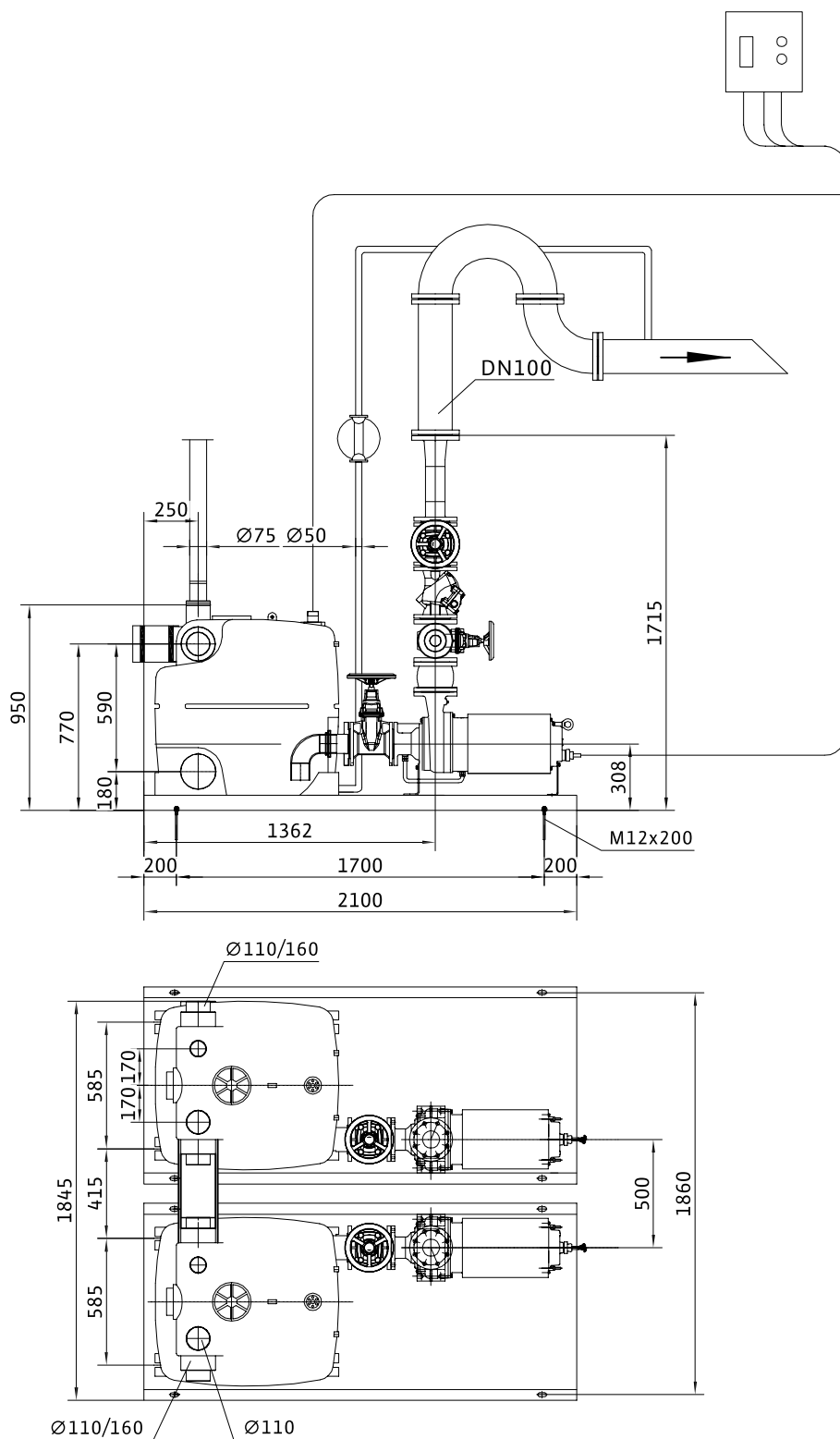
Dimensions 外形尺寸图

双泵单箱

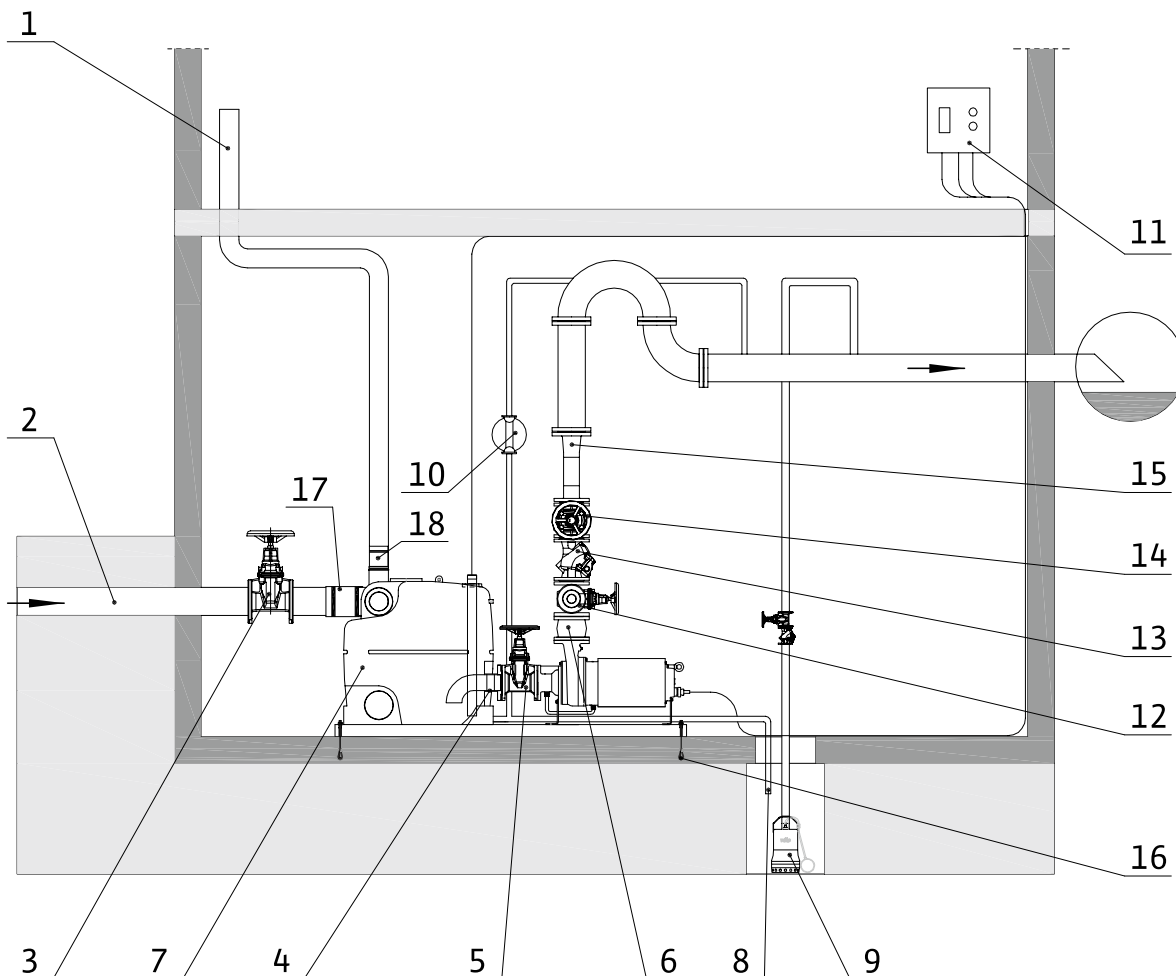


Dimensions 外形尺寸图

双泵双箱



安装示意图



1	放气管（至屋顶）（不在供货范围）	10	手动隔膜泵（非标配）（详见配件）
2	进水管（不在供货范围）	11	带微处理器的开关柜（标配）
3	进水阀门（含法兰）（非标配）（详见配件）	12	反冲洗阀门（标配）
4	橡胶连接套（标配）	13	止回阀（标配）
5	闸阀（标配）	14	闸阀（标配）
6	橡胶连接套（标配）	15	Y型管（标配）
7	污水收集罐（标配）	16	地脚螺栓（标配）
8	紧急排水管（不在供货范围）	17	橡胶连接套（标配）
9	排水泵（非标配）（详见配件）	18	橡胶连接套（标配）

“威乐(Wilo)的产品
节能降耗，技术领先，
服务更出色！”





威乐中国官方微信



威乐中国官方微博

Wilo-Drainlift EX/1707/EN/CHN

威乐（中国）水泵系统有限公司

地址：

北京市顺义区赵全营兆丰工业区兆丰二街 10 号
101300

电 话：010-52347888

传 真：010-52347666

电邮 Email：wilo.info@wilo.com.cn

网 址：www.wilo.com.cn

销售热线：800-810-8049

售后服务热线：400-898-4886

威乐（中国）销售网络

北京：010-52347916	重庆：023-67723781
上海：021-52981538	天津：022-58316023
广州：020-38817608	青岛：0532-66775608
成都：028-85031202	长沙：0731-82296546
沈阳：024-31300733	深圳：0755-23995481
西安：029-87651288	大连：0411-83700725/6
武汉：027-85355868	石家庄：0311-89690580
南京：025-83108033	

本资料全部内容属于威乐（中国）水泵系统有限公司所有，未经本公司书面许可，任何单位及个人不得以任何形式转载。